

A presentation of the LFV Group



and it's organisation 2006

The States directives for the LFV Group

LFV shall contribute to the transport policy objectives for air travel in an economically efficient and profitable manner by operating cost efficient, safe and well managed airports and air navigation services.

LFV Group business concept

Our business concept is to generate added value for our customers and promote air travel by operating cost efficient, safe and well managed airports and air navigation services.



LFV Group vision

Our customers will use LFV airports and air navigation services as a prime example of cost efficiency, safety and functionality.



LFV Group objectives

LFV shall achieve six Group objectives during the planning period up to and including 2010.

✓ Financial strength

LFV shall fulfil the financial objectives of its owner, the State, and through financial stability, manage recurring and irregular changes in traffic volume and traffic structure.

LFV Group objectives

- ✓ Airport development

The LFV Group provides its customers with airports that offer the best customer value in every category in the Nordic region.

- ✓ Attractive employer

The LFV Group is an attractive employer with a positive image.



LFV Group objectives

- ✓ Commercial products

The Group's net earnings from commercial products shall increase from SEK M 500 in 2005 to at least SEK M 800 by 2010.

- ✓ Air Navigation Services

The LFV Group shall successfully participate in the development of cross-border air navigation services within Europe.

LFV Group objectives

- ✓ Sustainable development

The LFV Group will be responsible for the sustainable development of the airports and air navigation services social and economic effects will be weighed together with environmental aspects.

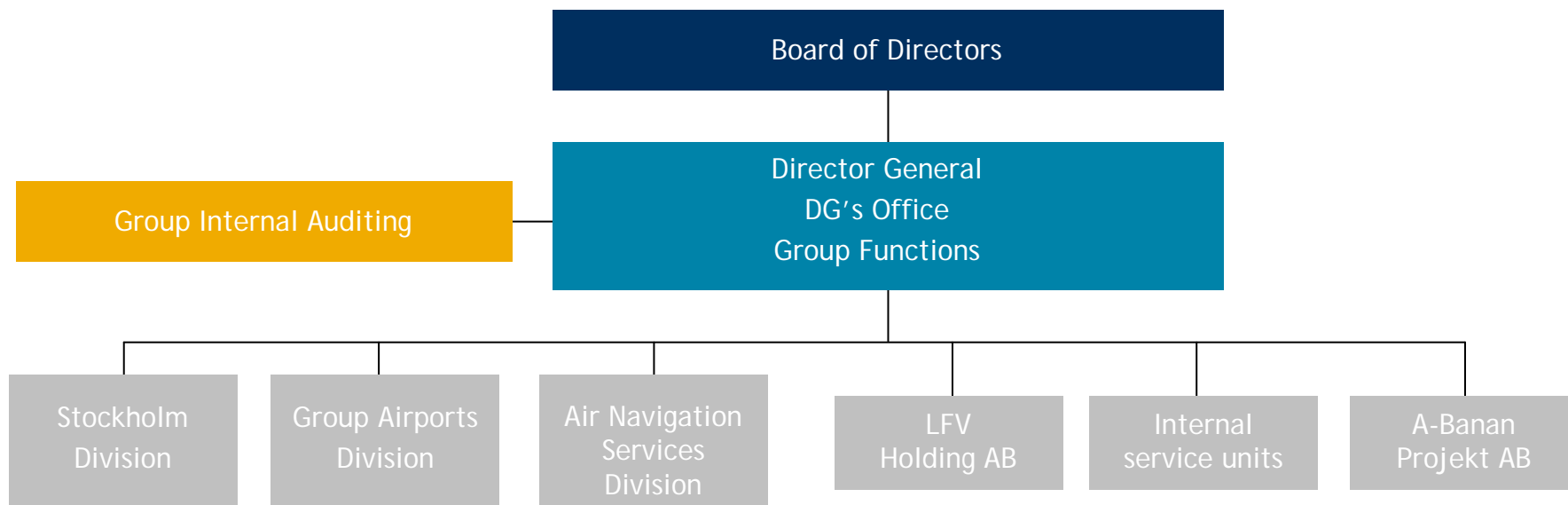


LFV Group values

- ✓ Active
- ✓ Professional
- ✓ Responsible



LFV Group organisation 1 January 2007



Governing the LFV Group

DG reports to the Board of Directors for the day to day running of the organisation.

DG has delegated to the Group Directors responsibility for the day to day running of the departments, with the exception of certain issues.



Example of issues dealt with by DG

- ✓ Business plans
- ✓ The Group's employer role
- ✓ Larger investments
- ✓ Certain legal issues
- ✓ The Group's trademark strategy
- ✓ Joint-Group technical standards
- ✓ Strategic and fundamental issues concerning the Group

Important events during 2006

- ✓ LFV is a climate neutral organisation
- ✓ LFV reduce charges for airlines by SEK M 100
- ✓ From 19 to 16 Airports
- ✓ Luftfartsverket became the LFV Group

LFV Group Airports

Airports 17

Stockholm Division
 Stockholm-Arlanda
 Stockholm-Bromma





Group Airports Division

Göteborg-Landvetter
 Jönköping
 Kalmar 3)
 Karlstad
 Kiruna
 Luleå 4)
 Malmö
 Ronneby 4)
 Skellefteå
 Sundsvall-Härnösand
 Umeå
 Visby
 Ängelholm-Helsingborg
 Örnsköldsvik
 Åre Östersund

Control Centres 2), 2

Malmö
 Stockholm-Arlanda



-  LFV Airports
-  ATS Units
-  Air traffic control centres
-  Head office, Norrköping

Air navigation services

Air Navigation Services Division

ATS units 1), 35
 Stockholm-Arlanda
 Arvidsjaur
 Borlänge
 Stockholm-Bromma
 Halmstad
 Jönköping
 Kalmar
 Karlstad
 Kiruna
 Kristianstad
 Göteborg-Landvetter
 Ljungbyhed
 Luleå 4)
 Malmen/Linköping
 Malmö
 Norrköping
 Ronneby 4)
 Saab/Linköping

Skavsta/Nyköping
 Skellefteå
 Sundsvall-Härnösand
 Såtenäs
 Säve/Göteborg
 Söderhamn
 Trollhättan
 Umeå
 Uppsala
 Vidsel
 Visby
 Västerås
 Växjö
 Ängelholm-Helsingborg
 Örebro
 Örnsköldsvik
 Åre Östersund

- 1) LFV provides local air traffic control services at 35 airports
- 2) Air traffic control centres are responsible for air traffic management in air space outside airport areas.
- 3) The airport is being transferred to a new owner on 1 January 2007.
- 4) LFV is responsible for civil aviation at the airport through an agreement with the Swedish Armed Forces

Stockholm-Arlanda Airport

- ✓ 17.5 million passengers, of which 12.2 million international
- ✓ 223,000 movements (starts and landings)
- ✓ 175 destinations, of which 140 international
- ✓ 72 airlines, of which 65 international
- ✓ Three runways, four passenger terminals
- ✓ 49 conference rooms for a total of 700 guests
- ✓ 46 shops, 35 restaurants, bars and cafés
- ✓ 4 hotels, 20,400 parking spaces
- ✓ 15,000 employees



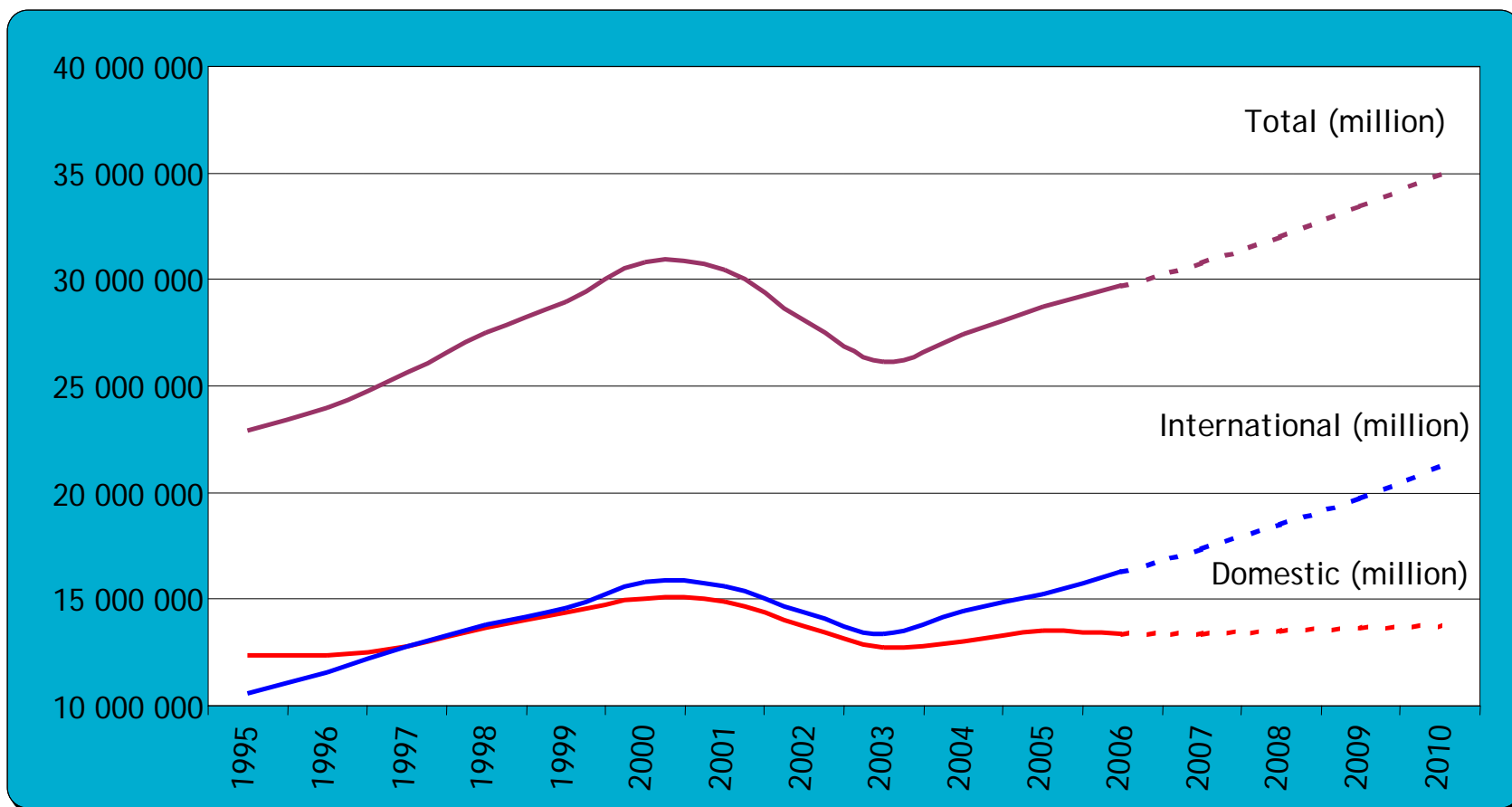
Air Navigation Services (ANS)

ANS provide air traffic services for civil and military aviation

- ✓ Air traffic control
- ✓ Briefing
- ✓ Telecommunications
- ✓ Weather information for civilian air traffic



Passenger development 1995-2010



2006 in brief

- ✓ Number of passengers +3%
(international +7%)
- ✓ Number of landings -3%
(international 0%)
- ✓ Take-off tonnage -2%
- ✓ Airspace movements IFR +1%, of
which over flights +8%



2006 in brief

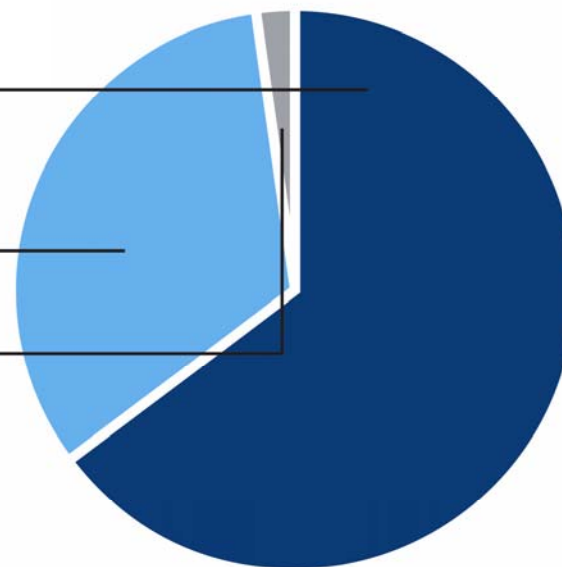
	2006	2005
✓ Passengers, millions	29,6	28,8
✓ Operating revenues, SEK M	5 980	5 683
✓ Operating expenses, SEK M	-5 240	-5 132
✓ Profit after financial items	447	238
✓ Return on equity after income tax and tax equivalent	9%	5%
✓ Equity/assets ratio	23%	21%
✓ Investments, SEK M	812	785
✓ No. of full-time equiv. employees	3 418	3 489

Operating revenues 2006, SEK M

Air traffic revenues 3,877 (3,712)

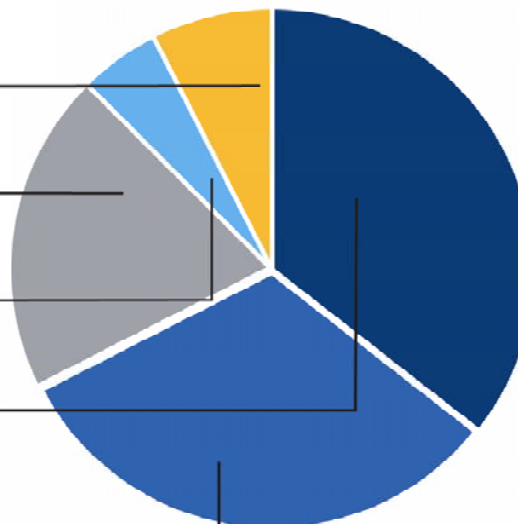
Commercial
revenues 1,981 (1,822)

Other 122 (146)

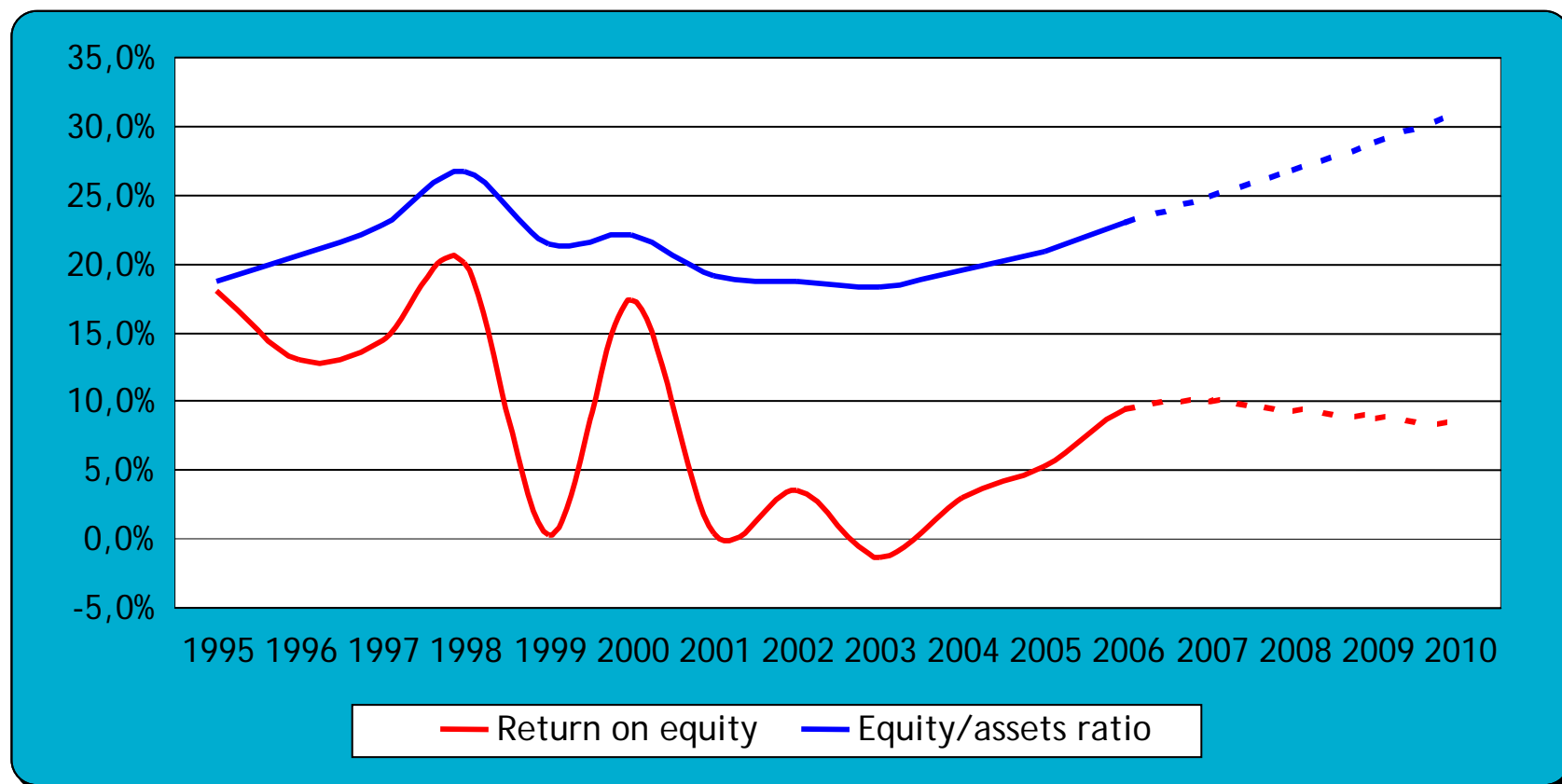


Operating expenses 2006, SEK M

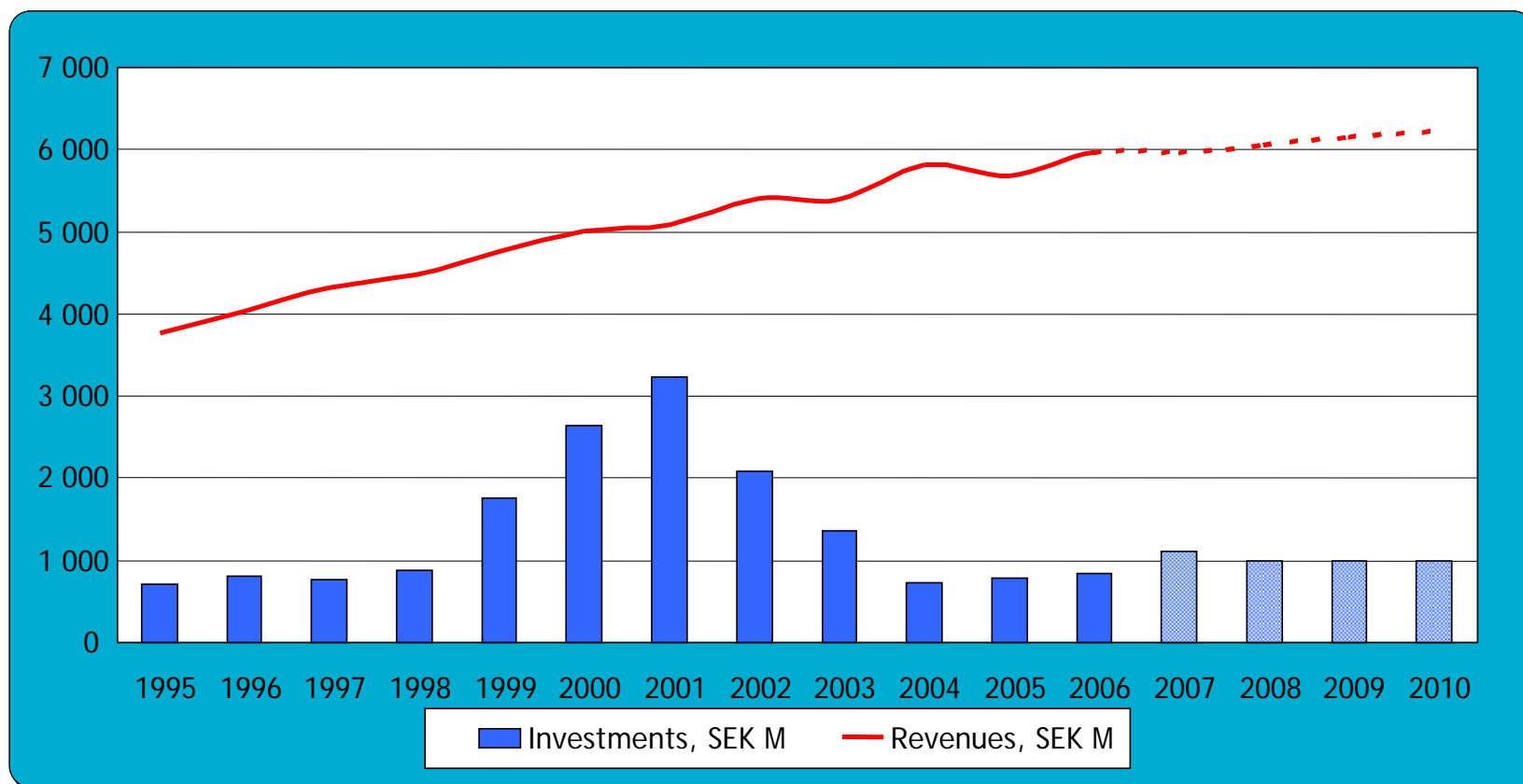
Profit after financial items	447 (238)
Depreciation	1,187 (1,188)
Net financial items	293 (313)
Personnel exp.	2,138 (2,079)
Various external expenses	1,915 (1,866)



Return and equity/assets ratio



Revenues and capital spending



Five year summary

	2006	2005	2004	2003	2002
✓ Operating revenues, SEK M	5 980	5683	5 821	5 402	5 384
✓ Operating expenses, SEK M	-5 240	-5 132	-5 306	-5 109	-4 884
✓ Profit after financial items	447	238	124	-48	151
✓ Equity/assets ratio	23%	21%	20%	18%	19%
✓ Return on equity tax equivalent	9%	5%	3%	-1%	4%
✓ No. full-time equiv. employees	3 418	3 489	3 786	3 810	3 789

LFV Group challenges

- ✓ Environmental management
- ✓ Passenger development and aviation market
- ✓ Airport structure
- ✓ Air navigation services future issues
- ✓ Cost efficiency and low capital spending
- ✓ Commercial enterprise

